

DxxU Series

Models: D06U, D08U, D10U, D12U

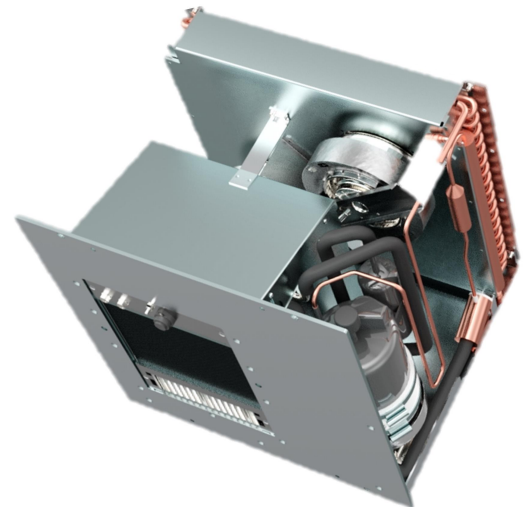
Climate units for lid integration, to be operated within the lids of 19" rack transport cases

Operational when stacked. Controlled via simple thermostat and via either remote or internal controller. Units are future-proof thanks to easily replaceable components.

Measures W*D*H in mm	W: 525 D and H are lid dependent
Weight in kg	~28 — ~62 (lid/compressor dependent)
Power supply	240V, 50Hz/60Hz
Environment air	-40°C to 55/60°C System is air cooled
Produced cold air	20 to 30° C
Refrigerant	R134a
Cooling cap.	800 W to 2.500 W
Cooling operation	+10°C to +55°C
Heating	730 W to 1.600 W
Heating operation	-40°C to +10°C
Principle	Direct evaporation
Partial load	Ca. 50% cooling cap optional
Generator operation	Appx same power consumption
UPS operation	Power limitation and unloaded start optional
Application range	Mobile, integrated within lids of DESAPRO, ZARGES and the likes
Intended climate	Desert, tropics, opt. maritime
Lacquered/coated	As per MIL standards, per customers demand or uncoated
Flanging	Size dependent, hinge or bayonet lock
Optional	Partial load, unloaded start, current delimiter, operation with UPS and/or generator

Available models

Art-Nr:	Cooling cap.	Refrig. cap. for HE >=	Kg~	
D06U06	2.730 Btu/h	800 W	6	28
D08U12	3.410 Btu/h	1.000 W	8	30
D10U12	4.780 Btu/h	1.400 W	10	40
D10U17	6.820 Btu/h	2.000 W	10	42
D12U24	8.530 Btu/h	2.500 W	12	44
D16U33	11.900 Btu/h	3.500 W	16	58



Images depicting similar configurations
Lid / enclosure is not included